










LOW-FIRE COMBO

EL146 Rain Cloud

Cone 06



Technique was achieved by brushing on two (2) layers of base glaze (EL146 Rain Cloud). Then apply two (2) layers of top glaze, letting glazes dry between coats.

 <p>CG788 Dutch Enamelware over EL146 Rain Cloud</p>	 <p>CG962 Blue Azure over EL146 Rain Cloud</p>	 <p>CG964 Kaleidoscope over EL146 Rain Cloud</p>
 <p>CG965 Mocha Marble over EL146 Rain Cloud</p>	 <p>CG977 Ink Spots over EL146 Rain Cloud</p>	 <p>CG981 Fruity Freckles over EL146 Rain Cloud</p>
 <p>CG986 Smoke & Fire over EL146 Rain Cloud</p>	 <p>CG993 Lavender Sprigs over EL146 Rain Cloud</p>	 <p>CG998 Pink Pixie over EL146 Rain Cloud</p>



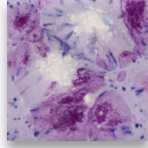
LOW-FIRE COMBO

EL146 Rain Cloud

Cone 06



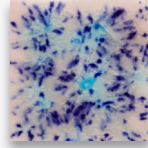
Technique was achieved by brushing on two (2) layers of base glaze (EL146 Rain Cloud). Then apply two (2) layers of top glaze, letting glazes dry between coats.



CG1006
Purple Reign

over

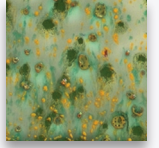
EL146
Rain Cloud



S2702
Northern Lights

over

EL146
Rain Cloud



S2714
Herb Garden

over

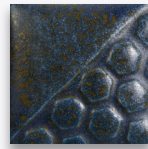
EL146
Rain Cloud



EL101
Oyster Shell

over

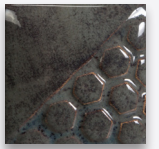
EL146
Rain Cloud



EL124
Stormy Blue

over

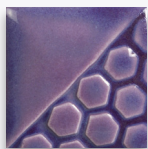
EL146
Rain Cloud



EL129
Slate

over

EL146
Rain Cloud



EL149
Lavender Flower

over

EL146
Rain Cloud



MB1556 Textured Bud Vases shown are fired to Cone 06.

MaycoColors.com

